

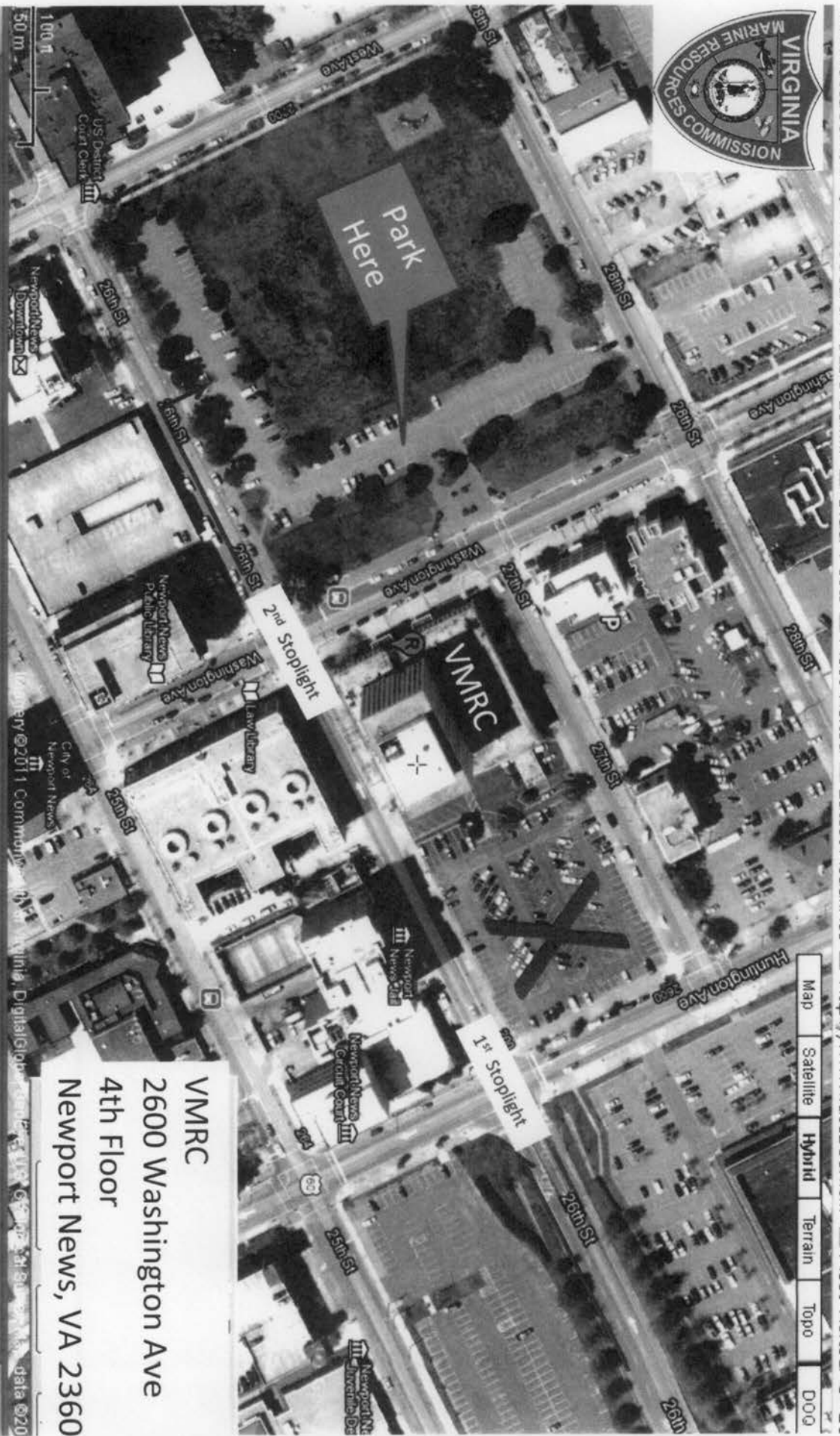
Mapper 2.0 - Newport News VA - Mozilla Firefox

View History Bookmarks Tools Help

UnityAmerica Credit ... ACME Mapper 2.0 - Newpo... x +

mapper.acme.com

Hot Search: Ozzie Guill... Older Posts Most Visited Latest Headlines http://www.facebook.c... Most Visited



VMRC
2600 Washington Ave
4th Floor
Newport News, VA 23660

Map Satellite Hybrid Terrain Topo D.O.Q

3 Firefox 2 Microsoft... Directions to... Microsoft Pow...



From Richmond

I-64 East to 664 South (right when you see the Hampton Coliseum). Go approx. 5 miles, take the 26th Street (Downtown Newport News) Exit. At the bottom of the ramp, straight through the first and second stoplights, crossing both Huntington Ave and Washington Ave. The building sits on your immediate right at the 26th/Washington Ave stoplight. Go ½ block and enter the municipal parking lot on your right. There is a fee.

You may park on the street if you find any empty 2 hour parking spots. Be careful, Newport News will ticket and tow. The spaces next to the building are 30 and 15 minute spaces.

From Norfolk/Virginia Beach

I-64 West to 664 South (right when you see the Hampton Coliseum). Go approx. 5 miles, take the 26th Street (Downtown Newport News) Exit. At the bottom of the ramp, straight through the first and second stoplights, crossing both Huntington Ave and Washington Ave. The building sits on your immediate right at the 26th/Washington Ave stoplight. Go ½ block and enter the municipal parking lot on your right. There is a fee.

MEMORANDUM TO PERSONS INTENDING TO APPEAR BEFORE THE
VIRGINIA MARINE RESOURCES COMMISSION

It is the avowed intent of the Marine Resources Commission to arrive at a clear understanding of all facts relating to any case before making a decision. In this regard, all parties, both for and against the proposal, will be heard, and all witnesses presented by any parties will be heard.

Any person appearing before the Commission has the right to be represented by counsel of their choosing; however, whether or not to obtain counsel is strictly an option of the appearing party.

The Commission is not a Court of law; but, in order to facilitate the hearing and arrive at a true and just decision, the Commission will, insofar as is practicable and possible, depending on the nature of the particular case, abide by the following general procedures:

- (1) Ascertain that all parties have been notified of the hearing, or are present, or are represented.
- (2) Statement from Commission personnel as to the nature of the case and basic facts of the case. Included in this presentation shall be all the facts necessary to establish the application as bona fide and meeting all of the administrative and statutory requirements necessary in order for the Commission to consider such application.
- (3) At the conclusion of the statement from Commission personnel, the applicant will be offered the opportunity to add anything, including witnesses, that he feels will clarify or strengthen the application.
- (4) All parties in opposition to the proposal will then be heard, including any witnesses these parties wish to present.
- (5) The applicant then shall have the opportunity to answer any of the statements of the parties in opposition and to summarize his case.

Any parties who appear before the Commission shall answer any questions of the Commission. If you submit additional material (e.g. photographs, maps, plans, relevant correspondence, etc.) which you believe is pertinent, and it is accepted by the Commission as evidence, it must be retained as part of the record in the case.

We thought you would like to have this information prior to appearing before the Commission. If you have any questions, please do not hesitate to call us.